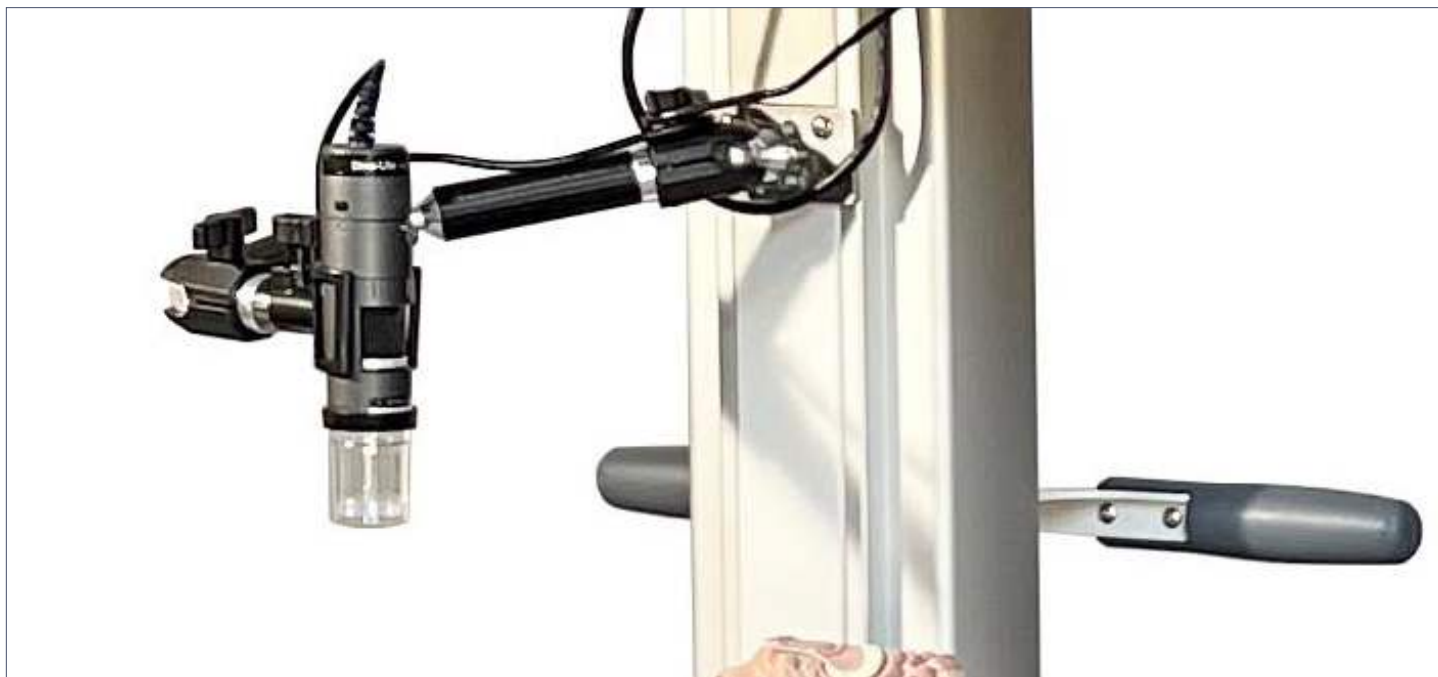


Maestro PathCam Micron Microscope Add-On Camera



SPECIFICATIONS

Construction

- Preprogrammed with PathCam Software settings: 1.3 MP CMOS Image Sensor
- Live camera feed: 1280 x 1024 pixels; Captures 800K to 5MB PNG files (no video)
- Optical magnification of 10x @ 9.2 in (23.4 cm) for longest working distance and 140x @ 1.2 in (3.0 cm) for shortest working distance
- Max FOV 1.5 x 1.2 in (3.8 x 3.0 cm); Min FOV 0.1 x 0.9 in (0.3 x 2.2 cm)
- Includes all cable connections and a set of (7) lens caps for protection, LED diffusion, focus, magnification, depth, and/or texture

Performance

- Magnified high-resolution capture
- 10–40x magnification for detailed tissue examination
- Annotate and label minute structures in software
- Manual focus
- Auto White Balance
- Auto Exposure
- (8) Built-in LED white lights
- Adjustable polarizer: reveals details by reducing reflections
- Measures distance and area in microns
- Add customizable grid in image area

Dimensions

- 1.5" diameter x 4" H

System Requirements

- Requires PathCam Imaging Software
- See PathCam specifications for computer and monitor requirements

Compatibility

- Fits all Mopec Maestro and Maestro Encore grossing stations
- Can also be used on AX260 Mobile Imaging Station (pictured)

MOPEC
GROUP

mopec
ELEVATING PATHOLOGY

MORTECH
MANUFACTURING

www.mopecgroup.com

800.362.8491

800 Tech Row, Madison Heights, MI